

ERRATA

Volume 96, Number 1, September 16, 1980

In the article, "Glycogen-Binding Protein Components of Rat Tissues," by Kimihiko Satoh and Kiyomi Sato, pp. 28-33: On page 31, Fig. 2, the lines indicating LG, LH, LI, MA, MB, and MC are in the wrong positions. The correct form of Fig. 2 is given here.

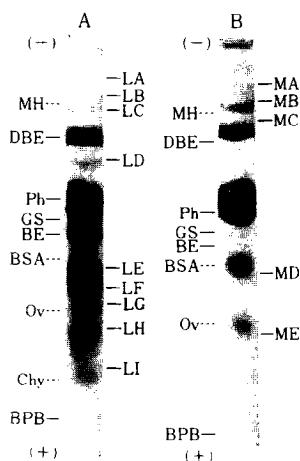


Fig. 2. SDS gel electrophoretic patterns of glycogen-binding protein components of rat skeletal muscle and liver. Glycogen-binding protein fractions of liver (gel A) and skeletal muscle (gel B) were prepared as described in MATERIALS AND METHODS, and analyzed by SDS gel electrophoresis using 5% polyacrylamide gels. Positions of standard proteins are shown by dotted lines; MH (the heavy chain of myosin), BSA (bovine serum albumin), Ov (ovalbumin), and Chy (chymotrypsinogen). LA to LI and MA to ME are the newly detected protein components.

Volume 96, Number 3, October 16, 1980

In "An mRNA Decapping Enzyme from Ribosomes of *Saccharomyces cerevisiae*," by Audrey Stevens, pp. 1150-1155: Page 1155, the following paragraph should be added to the Discussion.

"The cleavage of m^7GDP from capped mRNA by T4 polynucleotide kinase has been reported (K. A. Abraham and J. R. Lillehaug, 1976, *FEBS Lett.* 71, 49-52). No kinase

activity could be detected in my enzyme fractions by use of yeast RNA as a substrate."

Volume 96, Number 4, October 31, 1980

In "Specific Receptor Sites for α -Tocopherol in Purified Isolated Adrenocortical Cell Membrane," by Abbas E. Kitabchi, J. Wimalasena, and JoAnn Barker, pp. 1739-1746: Page 1740, line 1, the specific activity of the [^3H] d- α -tocopherol purchased from Amersham-Searle should read "13 Ci/1 mmole" instead of "13 mCi/1 mmole."

Volume 98, Number 1, January 15, 1981

In "Spectral Properties of a Cyanobacterial Cytochrome c Oxidase: Evidence for Cytochrome a.a₃," by Günter A. Peschek, pp. 72-79. Page 76, Table I, the value for oxygen uptake with ascorbate as donor, in complete assay suspension + 0.01 mM KCN (second line under Ascorbate column), should read "<1" instead of "90 0.1."